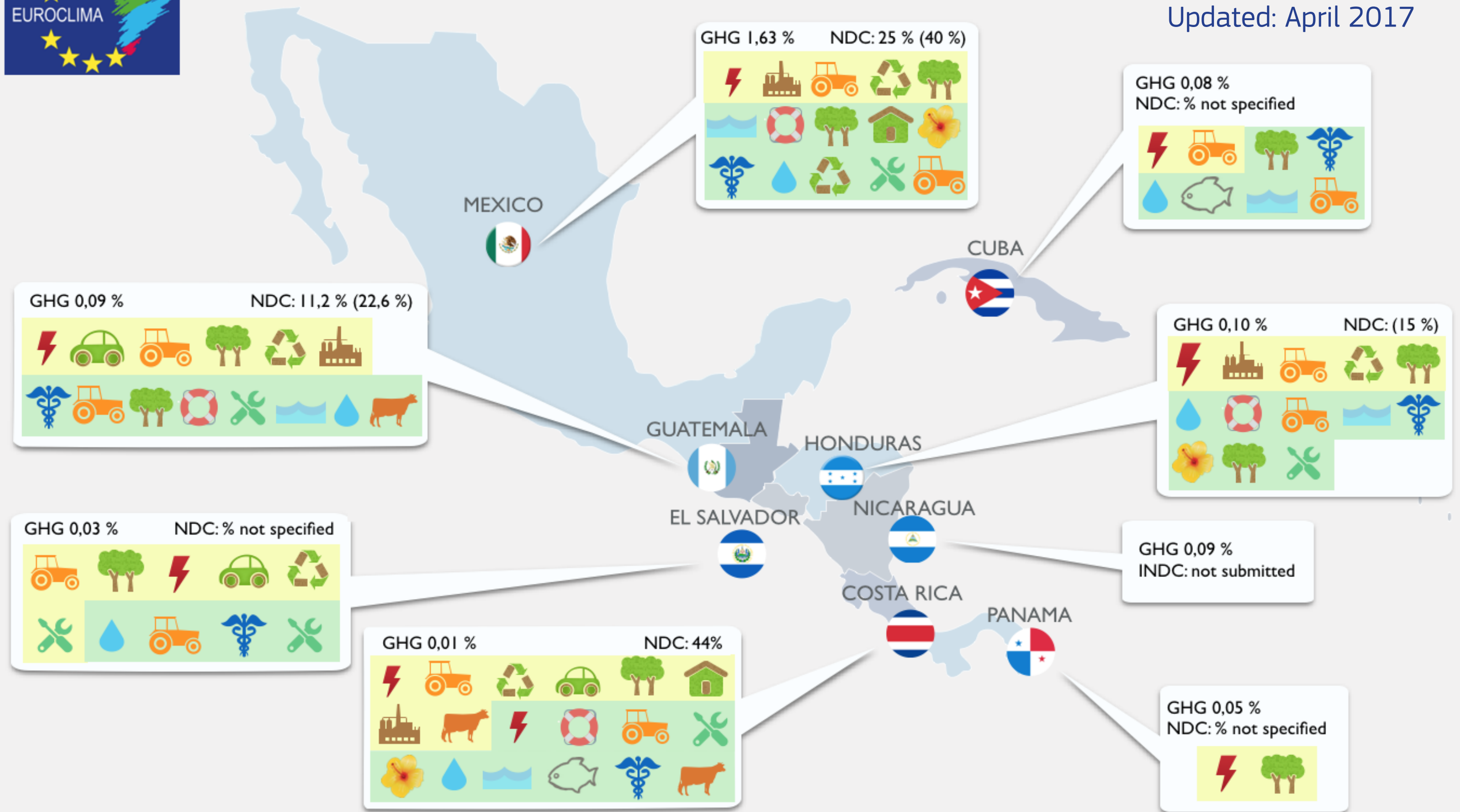




# (I)NDCs in Latin America: Priorities and Targets

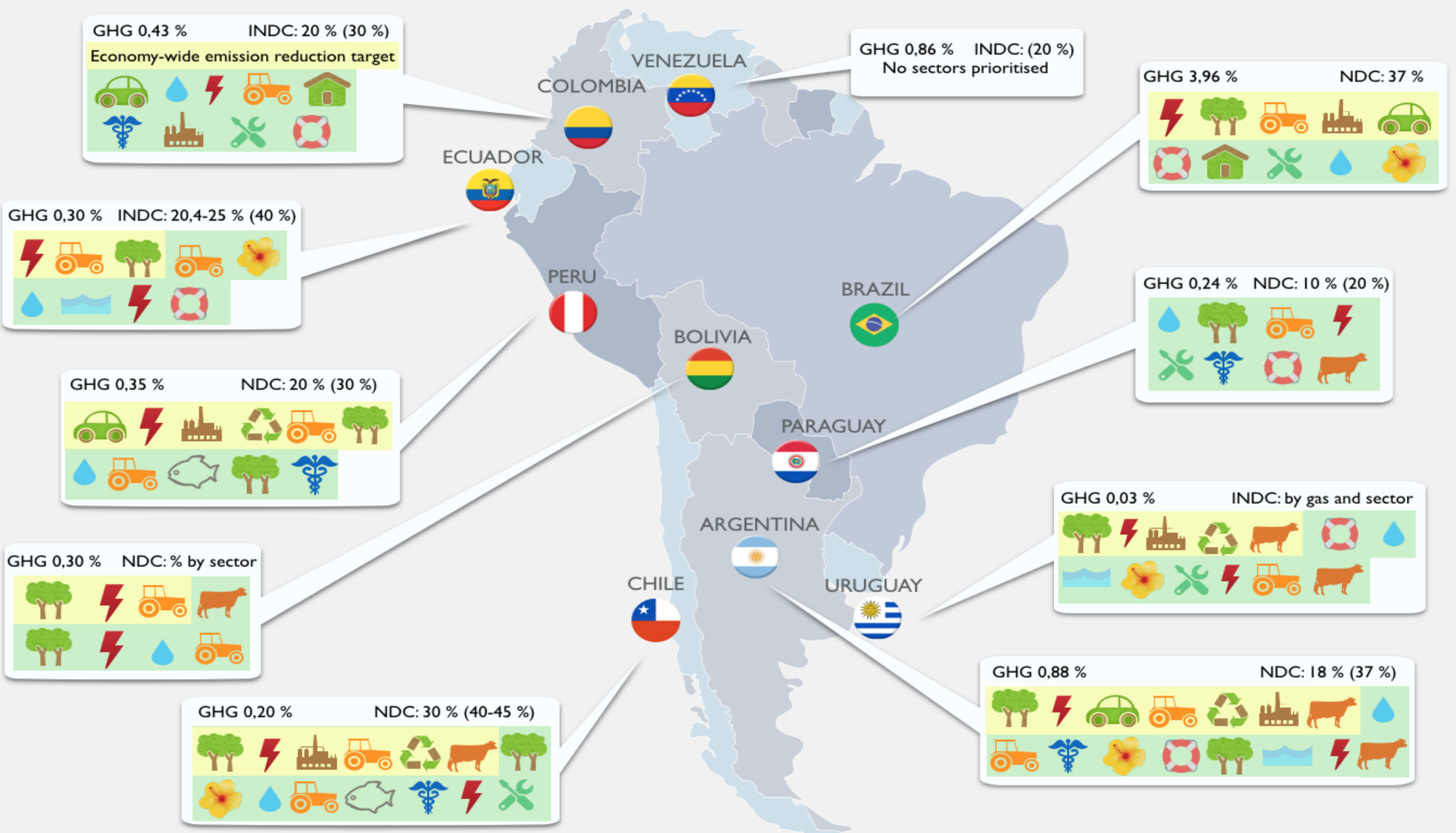
Updated: April 2017



**LEGEND**  
**GHG:** Percentage of global greenhouse gas emissions (WRI, 2012).  
**(I)NDC:** Target of GHG reduction with and without international funding, as indicated in the (Intended) Nationally Determined Contributions.  
Example: 25 % (45 %) means: 25 % GHG reduction target without and 45 % target with international funding, also called the conditional target. Countries have used different procedures to calculate targets. To facilitate comparison it is recommended to consult the (I)NDCs.  
Infographic map not on scale.  
The information contained in this Infographic is responsibility of EUROCLIMA Technical Assistance and does not necessarily reflect the official opinion of the European Union.

## Sectors prioritised in submitted (I)NDCs:

When a country's (I)NDC prioritises specific **mitigation** sectors, these are represented in a **yellow box**.  
When a country's (I)NDC prioritises specific **adaptation** sectors, these are represented in a **green box**.



EUROCLIMA: Science and Policy jointly fighting Climate Change



Conceptualisation: Jan Karremans  
Data Management: Jan Karremans, Guillermo Dascal, Silvia Brugger  
Design: Luis Piselli, Alexandra Cortés

[www.euroclima.org](http://www.euroclima.org)

Twitter: @EUROCLIMA\_UE\_AL

