

(I)NDCs in Latin America: Priorities and Targets



Updated: April 2017

LEGEND

GHG: Percentage of global greenhouse gas emissions (WRI, 2012).

(I)NDC: Target of GHG reduction with and without international funding, as indicated in the (Intended) Nationally Determined Contributions.

Example: 25 % (45 %) means: 25 % GHG reduction target without and 45 % target with international funding, also called the conditional target.

Countries have used different procedures to calculate targets. To facilitate comparison it is recommended to consult the (I)NDCs.

Infographic map not on scale.

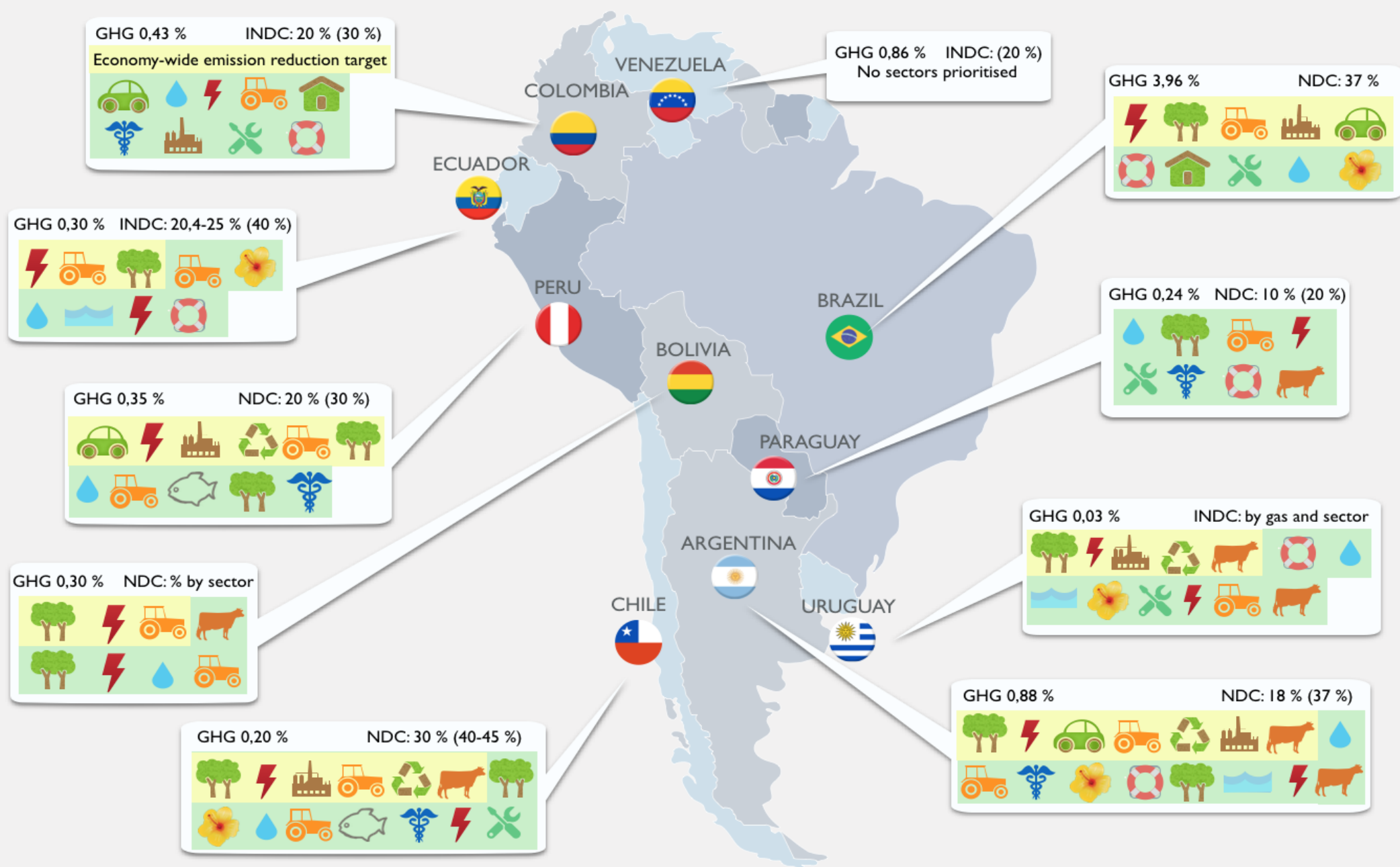
The information contained in this Infographic is responsibility of EUROCLIMA Technical Assistance and does not necessarily reflect the official opinion of the European Union.

Sectors prioritised in submitted (I)NDCs:

When a country's (I)NDC prioritises specific **mitigation** sectors, these are represented in a **yellow box**.

When a country's (I)NDC prioritises specific **adaptation** sectors, these are represented in a **green box**.

	Agriculture		Fishery		Coast		Energy		Disaster Risk Management
	Biodiversity		Health		Housing		Industry		Infrastructure
	Livestock		Transport		Water		Waste		Forestry / LULUCF



EUROCLIMA: Science and Policy jointly fighting Climate Change



Conceptualisation: Jan Karremans
Data Management: Jan Karremans, Guillermo Dascal, Silvia Brugger
Design: Luis Piselli, Alexandra Cortés

www.euroclima.org
Twitter: @EUROCLIMA_UE_AL

