



# Mobilise Your City



## 100 CITIES AND 20 NATIONAL GOVERNMENTS ENGAGED IN SUSTAINABLE URBAN MOBILITY



### The Partnership

MobiliseYourCity is a global climate partnership for integrated urban development planning in emerging and developing countries. It supports and engages local and national partner governments in improving urban mobility by providing a methodological framework and technical assistance, through capacity building, and by enabling access to funding at both local and national levels.

Particular attention has been paid to the methodological and advisory frameworks related to National Urban Mobility Policies and/or Investment Programs (NUMPs) and Sustainable Urban Mobility Plans (SUMPs) for more inclusive, more liveable, economically efficient and climate-friendly mobility in cities, as the bases upon which funding should be sought to develop infrastructure.

### The objectives:

- Enable transformational changes towards more inclusive, livable, and efficient cities.
- Foster more comprehensive, integrated and participatory urban mobility planning (local & national levels).
- Target reduction of transport-related GHG emissions in participating cities (>50%).



### Targets

MobiliseYourCity assists local and national partner governments in their efforts to improve urban mobility and cut at least 50% of their urban transport-related emissions by 2050.



### 100 cities

engaged in reducing their emissions by 50% through the development of integrated Sustainable Urban Mobility Plans (SUMPs).



### 20 countries

committed to introducing National Urban Mobility Policies and/or Investment Programs (NUMPs).

### The Challenge

Traffic congestion, poor air quality, road fatalities, economic inefficiency – due to difficult commuting conditions – , poor living conditions, and high carbon emissions are major problems resulting from poorly planned and unsustainable urban transport systems. People and governments, particularly in emerging and developing countries, are increasingly focused on making urban development a priority as a means to cope with growing populations and urbanisation trends.

### Transport and CO2 emissions

- Worldwide, the transport sector currently emits approx. **28% of all CO2 emissions** from fossil fuel combustion.
- Transport in cities accounts for nearly half of all sector-related emissions.
- Without taking significant steps towards sector transformation, emissions will triple by 2050.



- ✔ Focus on Sustainable Urban Mobility Policies & Planning
- ✔ Global partnership launched during COP21
- ✔ Active contribution to the New Urban Agenda and the European Consensus on Development
- ✔ Support to implement National Determined Contributions (NDCs)



# MobiliseYourCity SUPPORTS

## SUMP

A Sustainable Urban Mobility Plan (SUMP) is a strategic plan developed in an inclusive and integrated manner to meet the mobility needs of people and businesses in cities, harmonising and integrating existing planning approaches. It set cities on sustainable course regarding land use and urban mobility.

### WHY A SUMP?

- ✔ To establish a clear road map prioritizing sustainable transport projects and measures, and clarifying responsibilities.
- ✔ To set a robust, but flexible funding and implementation plan.
- ✔ To shift focus from road-focussed planning towards comprehensive sustainable urban mobility concepts.
- ✔ To set up feasible, widely agreed upon measures and monitoring & evaluation mechanisms.
- ✔ Access to national and international best-practice.

### SUMPs IN PRACTICE

The European Commission has been supporting SUMP methodologies in EU cities for many years.

Emerging countries, like Brazil, India and Mexico, cities have developed SUMPs.

Possible local funding mechanisms: tolls, paid parking, voluntary employer participation, mandatory funding of the transport system by companies and business, land value capture from sale proceeds/rentals along public transport corridors, betterment levy, special development charges.

## NUMP

A National Urban Mobility Policy and/or Investment Programme (NUMP) is a strategic policy or programme developed by national governments to enable local governments to tackle urban mobility challenges. It enhances the capabilities of cities to plan, fund & implement sustainable transport projects.

### WHY A NUMP?

- ✔ National policy and regulatory framework for subnational urban mobility plans.
- ✔ Clear political and strategic orientation, roles and responsibilities of planning stakeholders.
- ✔ Technical guidance for local transport professionals.
- ✔ Central tool to enable actual transformation of urban infrastructure.

### NUMPs IN PRACTICE

It is common practice in developed countries that the national government financially supports cities with regards to sustainable urban mobility.

Emerging countries like China, Brazil and India have already begun implementing NUMPs.

Possible national financing mechanisms: fare policies, taxes on private vehicle ownership and fuel, congestion charges, additional registration fees for four-wheelers.

## Possible modules to support SUMPs and NUMPs

- ✔ Inventory and assessment
- ✔ Awareness/MobiliseDays
- ✔ Institutional Framework\*
- ✔ Transport Technologies\*
- ✔ Monitoring and Reporting
- ✔ Vision and Goal Setting (+Measure Planning\*\*)
- ✔ Budgeting and Finance
- ✔ Capacity Development\*\*
- ✔ Participatory Process\*\*
- ✔ Coordination & Management

\* NUMP specific \*\* SUMP specific

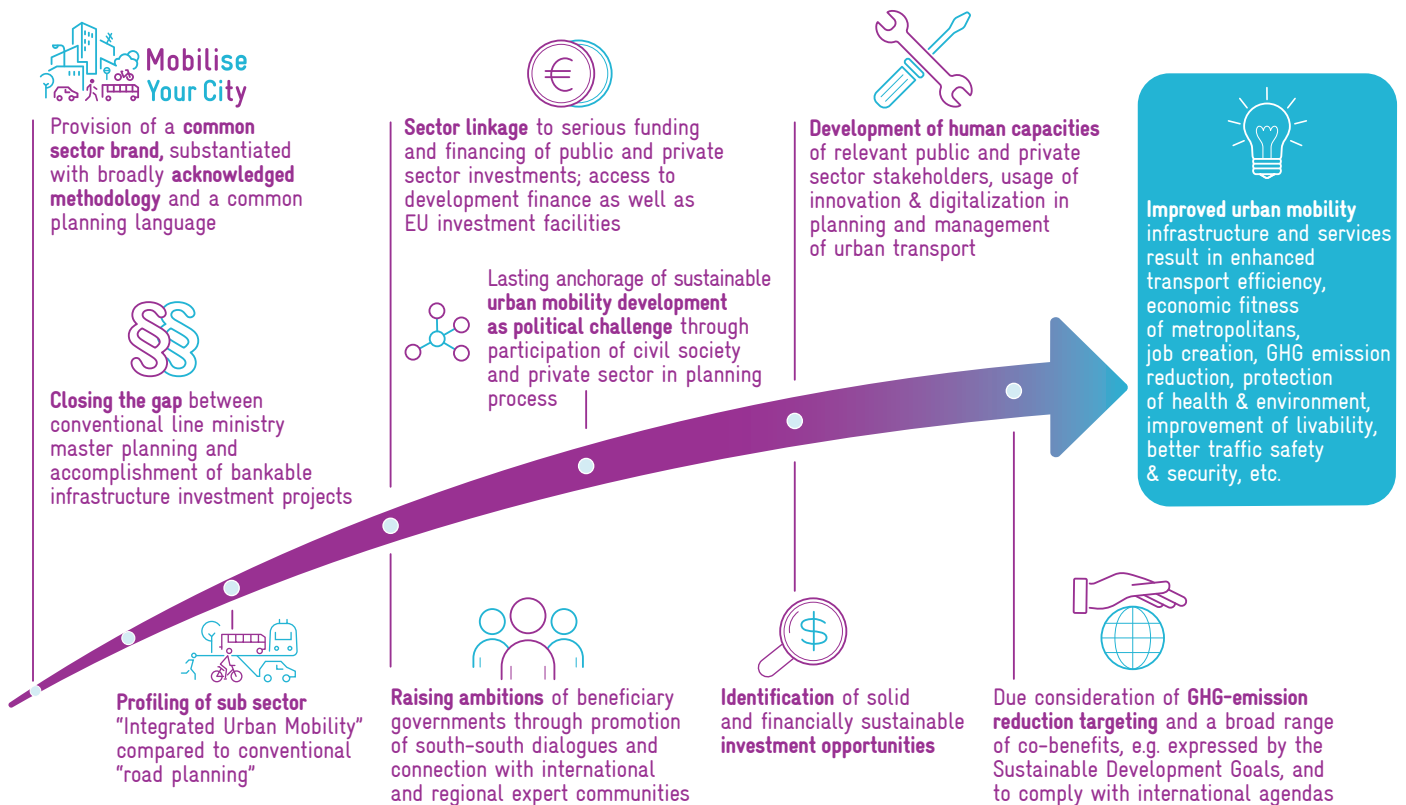


# How do we accompany the implementation of SUMP and NUMP?

## An international network of partners

MobiliseYourCity contributes to an intensified sharing of knowledge and experiences between its partners concerning institutional organization & sector governance, budgeting & finance, policies & regulations as well technical planning & design related to sustainable urban mobility. The Partnership works hand-in-hand with national government agencies, city institutions, transport operators, universities, think tanks and international and national consultants to foster high-quality learning and innovation in order to support them in their planning efforts.

## MobiliseYourCity results trajectory



## Areas of support for capacity building

- Guidance on how to plan urban mobility
- Organizational, project management and soft skills
- Vocational training to keep expert staff up-to-date
- Access to learning experiences from other cities
- Access to state-of-the-art **planning tools** and equipment
- Access to national and international **best-practices**
- Necessary **financial means** to maintain capacity



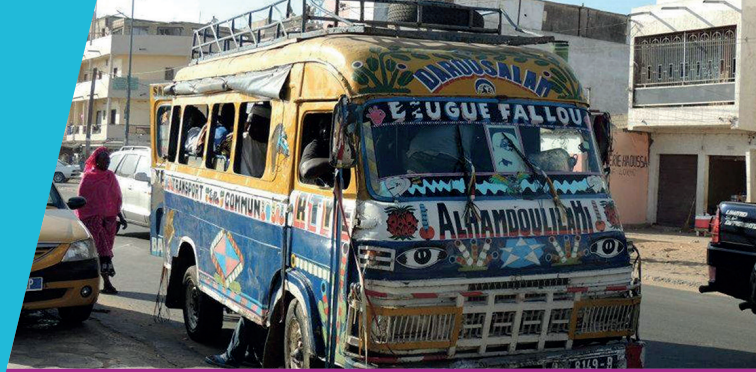
## Building a strong community of practice

Setting up a web-based international online networking & collaboration to share best practices in sustainable urban mobility planning and implementation of SUMP and NUMP to support the active and fruitful exchange between all partners of MobiliseYourCity. The exchange platform aims to support city-to-city cooperation as well as regional network dialogues, including peer-to-peer exchange and the opportunity for twinning of South-South and North-South partnerships.



# MobiliseYourCity in the wider context of climate change and development

MobiliseYourCity is part of UNFCCC's Marrakech Partnership for Global Climate Action (MP-GCA). Besides its contribution to the international climate process, the Partnership contributes to the New Urban Agenda, particularly Sustainable Development Goal #11 (SDG 11): Make cities inclusive, safe, resilient and sustainable. MobiliseYourCity is also perfectly aligned with the European Consensus on Development.



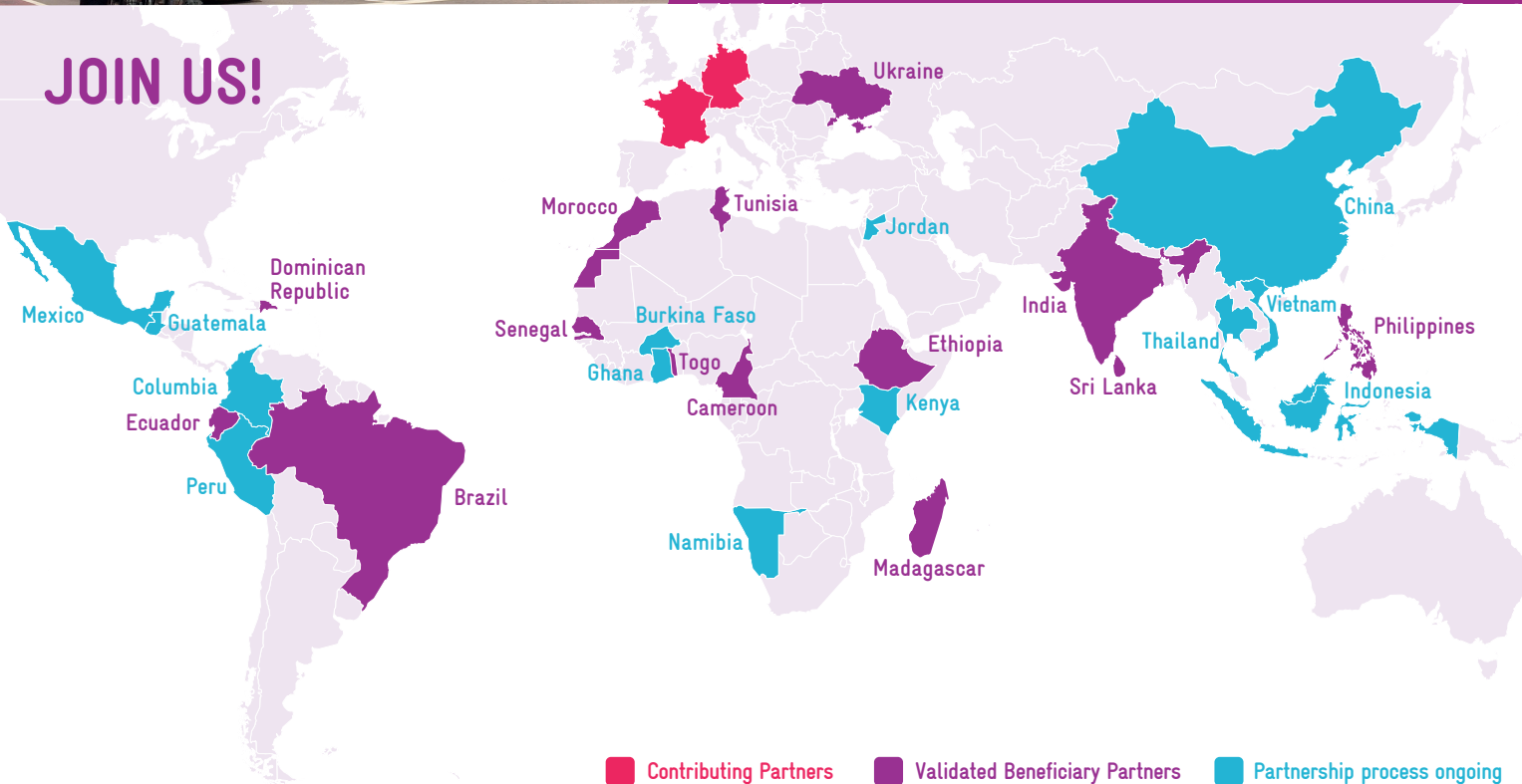
## Partnership: various ways to join us

**Beneficiary Partners:** Local authorities and national governments from emerging and developing countries.

**Knowledge and Network Partners:** Internationally operating or country-focused not-for-profit organisations, NGOs, institutions, universities, think tanks, networks, etc.

**Contributing Partners:** Direct donors or implementing agencies managing delegated funds can join the initiative.

## JOIN US!



## Contact us:

MobiliseYourCity Secretariat  
Rue du Commerce 123  
1000 Brussels, Belgium

M [contact@MobiliseYourCity.net](mailto:contact@MobiliseYourCity.net)  
T +32 2895 5838  
[www.MobiliseYourCity.net](http://www.MobiliseYourCity.net)  
Twitter: @MobiliseCity

Supported by:



Federal Ministry for the Environment, Nature Conservation, Building and Nuclear Safety  
of the Federal Republic of Germany

Implemented by:



Part of:



Knowledge & Network Partners:

